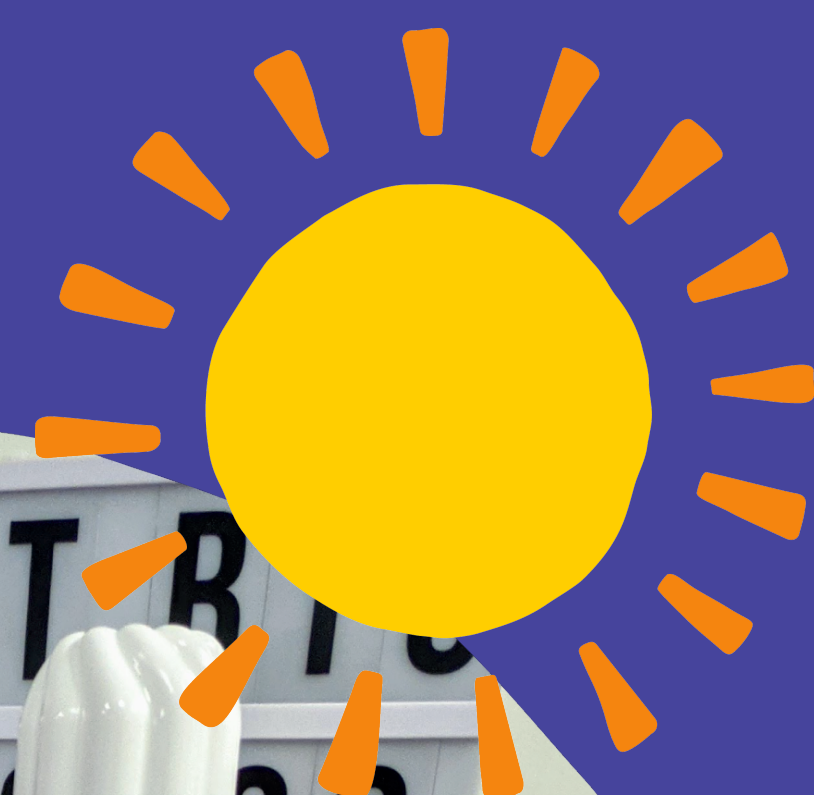
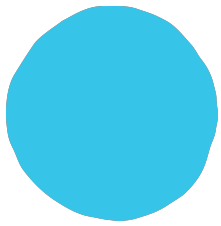
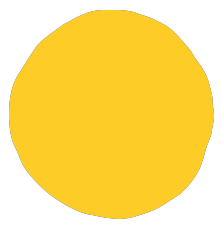
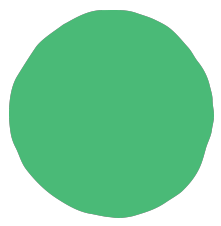
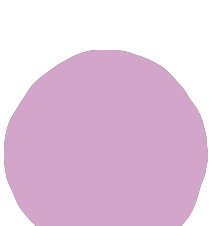
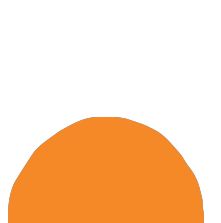
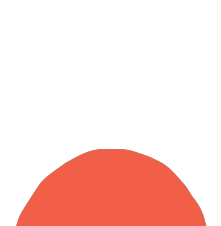


GO BE... CRUNCHIE



-  **Instant hot choc of choice**
-  **Hot water or your milk of choice**
-  **Digestive biscuits**
-  **Whipped cream or whip your own!**
-  **Crunchie chocolate or magic stars**
-  **Marshmallows**



- 1** Measure one mug of hot water from the kettle, or milk of choice and warm this up in a saucepan or microwave.
- 2** Add your instant hot choc of choice and stir until it dissolves.
- 3** Once dissolved, add your whipped cream and marshmallows.
- 4** Crush up some biscuits and crunchie chocolate and sprinkle on top.

